



Market Indicators

TOP GAINER	%	TOP LOSER	%
DLF	4.85	BANKBARODA	(2.72)
ONGC	2.81	HEROMOTOCO	(2.52)
NTPC	2.26	IDFC	(2.48)
BPCL	1.67	LT	(2.34)
POWERGRID	1.42	TATASTEEL	(2.31)

Broder Indices

Index	Closing Value	Change in (Pts)	Change (%)
MID CAP	6060.15	(19.64)	(0.32)
SMALL CAP	5726.91	(46.02)	(0.80)
IPO	1496.73	(7.32)	(0.49)

Sectoral Indices

AUTO	10036.26	(79.07)	(0.78)
BANKEX	12781.91	(85.02)	(0.66)
CD	6854.28	29.06	0.43
CG	8992	(131.58)	(1.44)
FMCG	5829.24	(24.06)	(0.41)
HC	7933.35	(19.34)	(0.24)
IT	6777.45	(10.46)	(0.15)
METAL	8564.01	(61.33)	(0.71)
OIL & GAS	8463.18	40.92	0.49
POWER	1646.84	9.14	0.56
PSU	6389.92	12.84	0.20
REALTY	1795.52	14.16	0.79
TECK	3836.06	(11.14)	(0.29)

Currency Movement

USDINR	54.10	0.24↓
EURINR	70.49	0.39↑
GBPINR	82.47	0.09↓
JPYINR	57.14	0.23↓

Market Breadth

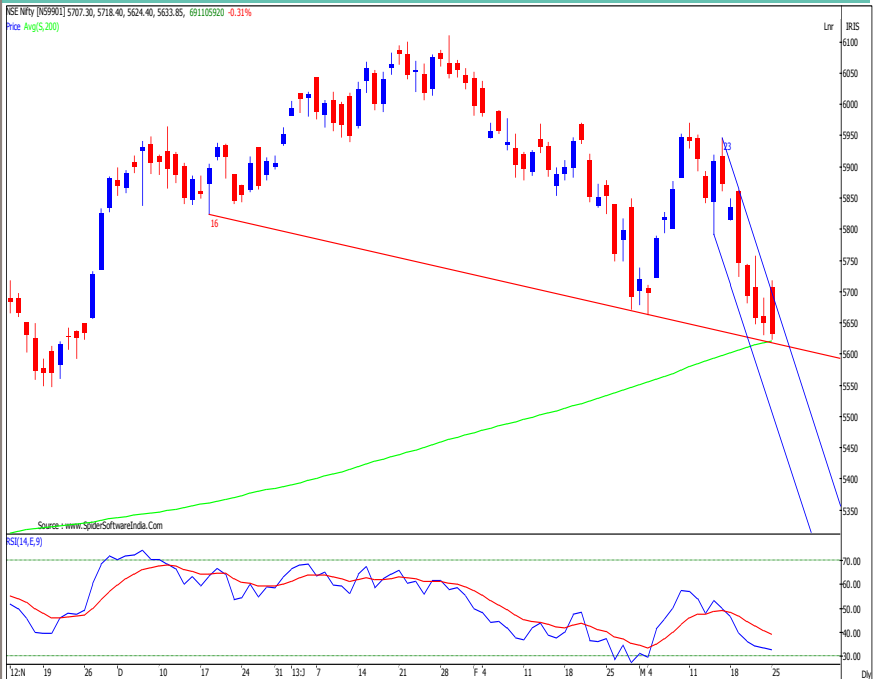
Exchange	Advances	Declines	Unchanged
BSE	1028	1884	122
NSE	556	962	78

MARKET STATISTICS

ACTION	FII (₹) Cr.	DII (₹) Cr.
CASH BUY	3366.18	1089.57
CASH SELL	2648.29	1515.18
(Provisional)	+717.89	(425.61)

FII Derivatives	Buy (Cr.)	(Sell Cr.)	Net (Cr.)
Index Futures	4801.01	4603.00	198.01
Index Options	20544.86	20681.60	(136.74)
Stock Futures	7838.93	7841.25	(2.32)
Stock Options	1434.54	1598.93	(164.39)
Total			(105.44)

Exhibit 1: Daily Nifty Chart



NIFTY OUTLOOK

Yesterday the Nifty opened strong gap up of 55.95 points on back of strong global cues. The Nifty lost ground in the afternoon session from the intraday high after the rumor of one of the collation party may pulling out support from the ruling party after the DMK withdrew support to the UPA last week. The Nifty fell seventh consecutive session shedding 4.35% since March 14, 2013 owing to a domestic politically uncertain environment. At end of the day Nifty closed at 5633.85 level with loss of 0.31%.

- ◆ The price action has formed sizeable bear candle and failed to cross upper channel and subsequently closed at demand line which is connecting tow significant low of 5823 & 5663 which are near term low of December 18, 2012 and March 3, 2013. which coincide the 200 days SMA 5621.43. A sustained breach of the long term moving average on a closing basis would lead to capitulation and accentuate declines towards the 5500 region.
- ◆ A pullback attempt will see the index face stiff resistance around 5750 - 5800 area being the 38.2% and 50% retracement of the current down move of 5970 - 5631.
- ◆ On the downside, we expect the index to head towards the 5550 - 5500 region before any meaningful recovery takes place. The November 2012 low at 5548 and the upper band of the major rising gap area (5526-5447) formed in mid-September 2012 at 5526 make the 5550-5500 region a crucial support to watch out in the short term

For today trend deciding level for Nifty placed at 5659 if Nifty trade above this level then it may go up to 5670 - 5700 - 5723 level. However if Nifty trade below 5659 then it may find immediate support at 5623 level any violation of such support would signal further decline up to 5600 - 5570 level.

Indian Index Movement		Important Level			
MOVEMENT	SENSEX	NIFTY	SMA	SENSEX	NIFTY
OPEN	18894.13	5707.30	5 Days	18820	5677
HIGH	18950.22	5718.40	20 Days	19164	5790
LOW	18654.61	5624.40	48 Days	19493	5896
CLOSE	18681.42	5633.85	100 Days	19334	5864
CHANGE IN PTS	(54.18)	(17.50)	120 Days	19231	5834
CHANGE IN %	(0.29)	(0.31)	200 Days	19537	5621

*Source: BSE, NSE, BI, Capital Market & rbi.org.in



Symbol	PIVOT TABLE			Simple Moving Average				
	S2	S1	Pivot Point	R1	R2	5 Days	20 Days	55 Days
SENSEX	18466	18574	18762	18870	19058	18820	19164	19529
NIFTY	5565	5599	5659	5693	5753	5677	5790	5909
BANK NIFTY FUTURE	10922	11033	11217	11328	11513	11292	11743	12264
NIFTY FUTURE	5582	5614	5665	5697	5749	5689	5805	5924
NIFTY COMPONENTS								
ACC	1139	1147	1159	1167	1178	1145	1214	1267
AMBUJACEM	166	169	175	178	183	174	186	192
ASIANPAINT	4769	4824	4913	4968	5056	4929	4686	4542
AXISBANK	1280	1295	1315	1329	1349	1308	1358	1403
BAJAJ-AUTO	1769	1786	1812	1829	1856	1811	1912	2002
BANKBARODA	634	646	667	679	700	675	711	781
BHARTIARTL	281	285	291	295	301	291	310	324
BHEL	175	177	181	183	186	181	196	208
BPCL	363	368	373	378	384	374	386	396
CAIRN	271	274	280	283	289	281	294	313
CIPLA	376	378	382	384	388	384	381	393
COALINDIA	291	294	297	301	304	298	299	318
DLF	229	236	241	248	253	244	266	262
DRREDDY	1709	1738	1767	1795	1824	1778	1789	1856
GAIL	302	308	318	324	334	319	330	344
GRASIM	2814	2840	2881	2906	2948	2890	2972	3017
HCLTECH	754	761	767	773	779	773	762	713
HDFC	791	799	809	816	826	793	794	805
HDFCBANK	604	607	610	613	616	616	634	651
HEROMOTOCO	1573	1596	1631	1653	1688	1639	1668	1731
HINDALCO	85	86	89	91	94	90	97	110
HINDUNILVR	455	458	462	465	468	461	451	467
ICICIBANK	984	998	1023	1038	1063	1022	1072	1126
IDFC	133	136	142	145	150	142	150	161
INFY	2818	2835	2850	2868	2882	2862	2906	2809
ITC	297	300	304	307	311	305	298	296
JINDALSTEL	341	346	354	359	367	345	353	391
JPASSOCIAT	61	62	64	66	68	66	72	79
KOTAKBANK	618	625	636	643	655	635	653	657
LT	1323	1345	1383	1404	1442	1413	1441	1492
LUPIN	619	625	632	638	645	626	606	598
M&M	849	857	868	876	888	874	892	898
MARUTI	1244	1264	1297	1318	1351	1321	1386	1490
NTPC	138	140	143	145	147	141	147	151
ONGC	295	300	305	310	315	300	311	316
PNB	702	713	729	740	756	737	787	841
POWERGRID	102	103	104	105	105	104	108	110
RANBAXY	415	425	432	442	449	437	415	439
RELIANCE	791	800	812	821	833	816	830	859
RELINFRA	332	338	347	353	362	356	411	478
SBIN	2007	2032	2079	2105	2151	2117	2165	2305
SESAGOA	147	150	153	156	160	153	159	172
SIEMENS	542	548	556	563	571	557	537	593
SUNPHARMA	812	816	822	826	832	830	818	773
TATAMOTORS	265	268	272	275	279	276	291	301
TATAPOWER	93	94	96	97	99	97	98	101
TATASTEEL	303	309	319	324	334	328	345	379
TCS	1518	1531	1541	1554	1565	1550	1546	1433
ULTRACEMCO	1845	1854	1865	1874	1885	1861	1887	1908
WIPRO	423	427	434	438	445	433	433	417



Economic Calendar

Impact	IST	Location	Indicator	Unit	Forecast	Previous	Actual
Medium	26th-29th	Britain	Nationwide HPI (M o M)	%	0.2	0.2	
Low	15:30	Britain	Chancellor Osborne Speaks				
Medium	16:30	Britain	CBI Realized Sales		12	8	
High	18:00	USA	Core Durable Goods Orders (M o M)	%	0.7	2.3	
Medium	18:00	USA	Durable Goods Orders (M o M)	%	3.8	-4.9	
Medium	18:30	USA	S&P/CS Composite-20 HPI (Y o Y)	%	7.9	6.8	
High	19:30	USA	CB Consumer Confidence		69.3	69.6	
High	19:30	USA	New Home Sales	K	426	437	
Low	19:30	USA	Richmond Manufacturing Index		8	6	



DISCLAIMER: This document is not for public distribution and has been furnished to you solely for your information and must not be reproduced or redistributed to any other person. Persons into whose possession this document may come are required to observe these restrictions.

The information and views in this report, our website & all the service we provide are believed to be reliable, but we do not accept any responsibility (or liability) for errors of fact or opinion. Users have the right to choose the products that suits them the most. Investment in Stocks has its own risks. Sincere efforts have been made to present the right investment perspective. The information contained herein is based on analysis and up on sources that we consider reliable. We, however, do not vouch for the accuracy or the completeness thereof. This material is for personal information and we are not responsible for any loss Incurred based upon it & take no responsibility whatsoever for any financial profits or loss which may arise from the recommendations above.

Recipients of this material should rely on their own investigations and take their own professional advice. Each recipient of this document should make such investigations as it deems necessary to arrive at an independent evaluation of an investment in the securities of companies referred to in this document including the merits and risks involved), and should consult their own advisors to determine the merits and risks of such an investment. Price and value of the investments referred to in this material may go up or down. Past performance is not a guide for future performance. Certain transactions - futures, options and other derivatives as well as non-investment grade securities - involve substantial risks and are not suitable for all investors. Reports based on technical analysis centers on studying charts of a stock's price movement and trading volume, as opposed to focusing on a company's fundamentals and as such, may not match with a report on a company's fundamentals.
All the Rights are reserved.

Contact Us: research@urjatrade.com

Web: www.LAAVLE.com

Registration: NSE - CASH INB230696132 | NSE - FO INF230696132 | BSE - CASH INB010696137

URJA INVESTMENT PTE. LTD.

Private & Confidential